



FOR SALE BY PRIVATE TREATY

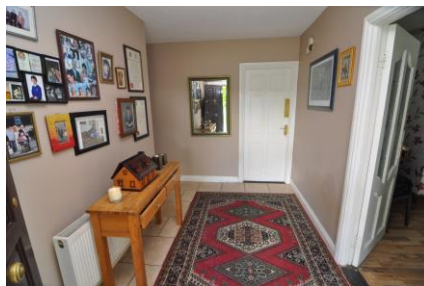
Castleroe Maganey Athy County Kildare R93F9Y3

Located on the edge of a rural country village this lovely 3-bedroom detached bungalow on c.0.5 acres is located just a short stroll from the local primary school and church. There is also a modern convenience store with filling station and deli counter just a short distance away. The property is located just between Athy and Castledermott. It has been well maintained over the years with new Upvc double glazed windows, a modern kitchen and new fully tiled Bathroom suite. There is parking for numerous cars and a large private garden to rear. This is a lovely family home and viewings are highly recommended.

Price €230,000

62 Leinster Street, Athy, County Kildare
Tel: 059 8632815 Email: connaughtonauctioneers@gmail.com
PSRA No: 002513





Entrance Hallway

3.4m (11'2") x 2.1m (6'11")

Teak Front Door, Tiled Floor, Radiator.



Lounge

4.8m (15'9") x 3.8m (12'6")

Marble Fireplace with Solid Fuel Stove, Wooden Floor, Curtains.



Kitchen

5.3m (17'5") x 3.1m (10'2")



Fully Fitted Wall & Floor Units, S.S. Sink, Cooker Point, Extractor Fan, Radiator.



Utility Room

2.7m (8'10") x 1.5m (4'11")

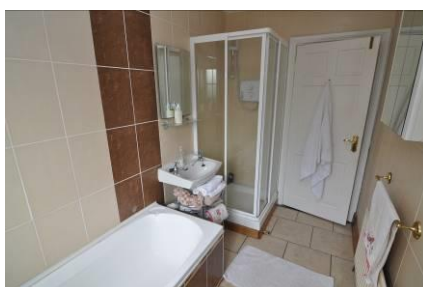
Fitted Wall Units, Counter Top,
Plumbing for Washing Machine,
Door to Rear Garden, Airing Press



Hallway

3.9m (12'10") x 0.9m (2'11")

Tiled Floor



Bathroom

3.1m (10'2") x 1.7m (5'7")

Bath W.C. Wash Hand
Basin, Shower Cubicle with Electric
Shower, Fully Tiled Walls & Floor



Bedroom 1

3.8m (12'6") x 3.1m (10'2")

Built-In Wardrobes, Timber Floor, Radiator, Curtains



Bedroom 2

3m (9'10") x 2.7m (8'10")

Timber Floor, Radiator, Curtains



Bedroom 3

3m (9'10") x 2.8m (9'2")

Timber Floors, Curtains, Radiator.



FEATURES

- Water – Group Scheme
- Oil Fired Central Heating
- ¼ Mile to School & Church
- 2 Miles to Castledermott
- Upvc Double Glazed Windows

